



Republika e Kosovës
Republika Kosova-Republic of Kosova
Qeveria - Vlada - Government
Zyra e Kryeministrit - Ured Premijera - Office of the Prime Minister
Agjencia e Statistikave të Kosovës - Agencija za Statistike Kosova - Kosovo Agency of Statistics

Series 5: Social Statistics

Labour Force Survey for 2024



Prishtina, 2025



Republika e Kosovës
Republika Kosova-Republic of Kosova
Qeveria - Vlada - Government
Zyra e Kryeministrit - Ured Premijera - Office of the Prime Minister
Agjencia e Statistikave të Kosovës - Agencija za Statistike Kosova - Kosovo Agency of Statistics

Series 5: Social Statistics

Labour Force Survey for 2024



Publisher: Kosovo Agency of Statistics (KAS)

Publication date: May, 2025

© Kosovo Agency of Statistics

Reuse is authorised provided the source is acknowledged.

A lot of information is available at KAS webpage:

<http://ask.rks-gov.net>

Foreword

Prishtinë, 22.05.2025. The purpose of the Labour Force Survey (LFS) in Kosovo is to provide statistical data on statistical indicators of the labour market and facilitate their comparison with previous years and quarters. The report includes data by age, gender, employment status, economic activities, occupations and other areas of the labor market.

Compared to the previous year (2023), the labour force participation rate increased by 42.5%. In 2024, the employment rate was 38.6%, the unemployment rate was 10.8%, and the inactivity rate was 56.8%.

The LFS data reveals that part-time employment was 6.9%, self-employment was 16.6% of employed and vulnerable jobs were 14.5% (including persons who are self-employed and have no employees and those who work without pay in a family business).

Compared to the previous year (2023), the labor force participation rate increased by 42.5%. In 2024, the employment rate was 38.6%, the unemployment rate was 10.8%, and the inactivity rate was 56.8%.

Trade, construction, education, other service activities, and manufacturing sectors continue to employ over half of the working population.

Females made up 25.9% of the labour force, while males represented 60.6% out of a total participation rate of 43.2%.

The unemployment rate among young people was 19.5%, with 55.8% of youth aged 15-19 being long-term unemployed for more than a year. Furthermore, 31.4% of respondents aged 15-24 were neither employed nor in education or training, also known as NEET.

KAS thank the participants and other stakeholders, especially its staff in the implementation of LFS 2024. We also thank the households who shared their time and provided data. Their contribution has been important in gathering this comprehensive information.

At the same time, KAS informs all users of official statistics that KAS, within budget opportunities, is continuously making capacity building efforts to publish stable and more quality statistics.

Based on the Law on Official Statistics, No. 04/L-034, the Kosovo Agency of Statistics is responsible for the production of official statistics in the Republic of Kosovo, therefore, when using this data, the source shall be cited.

Comments, remarks, suggestions and proposals regarding this publication are welcome and can be sent to email address: infoask@rks-gov.net

Publication was prepared by:

Naime Rexhepi - Director of the Department of Social Statistics
Bujar Hajrizi - Acting Head of Division of Social Statistics
Besarta Thaçi - Officer
Shpetim Bullatovci - Officer

May, 2025

Executive Director, KAS
Mr. Avni Kastrati

Introduction

The Labour Force Survey (LFS) was initiated by the Kosovo Agency of Statistics (KAS) in 2001 and continued as an annual survey until 2009. However, due to the preparation of the Population Census, the LFS was not conducted in 2010 and 2011.

Since 2012, the LFS has been conducted as a continuous survey (52 calendar weeks - reference week) according to the Eurostat methodology, with some corrections:

- Revised questionnaire (following the Eurostat guidelines).
- New sampling frame (based on the Population, Households and Dwellings Census in Kosovo 2011).
- Sample rotation means that the proportion of the sample is replaced in each round of survey according to a predefined rotation model. The sample consists of a number of sub-samples or groups of rotations. In each round of survey, a new rotation set is inserted into the sample to replace the rotation group from the previous rounds of survey. The sample share that is common for the two rounds of the survey allows the estimation of gross changes and enables reliable estimated of net changes. Also, from a practical point of view, the independent interviewing and improved controls during data analysis is enabled.
- Interview of the households are conducted via laptop, through the CAPI method – Computer Assisted Personal Interviewing, while re-surveys (interviews for the second, third and fourth time) are conducted with the CATI method – Computer Assisted Telephone Interview.

The main objectives of LFS are collection of information mainly on the supply side of the labour market, i.e., information on those who are working or actively looking for a job.

List of Abbreviations

LFS	-	Labour Force Survey
KAS	-	Kosovo Agency of Statistics
EUROSTATI	-	Statistical Office of the European Communities (EU)
EU	-	European Union
NACE	-	Statistical Classification of Economic Activities
ISCO	-	International Standard Classification of Occupations
EA	-	Enumeration Area
NEET	-	Young people not in education, employment, or training
CAPI	-	Computer-Assisted Personal Interviews
CATI	-	Computer-Assisted telephone interviewing

List of Contents

Introduction.....	2
Definitions	5
Key indicators.....	8
Tab. 1: Key indicators of the labour market	11
Employment.....	12
1.1: Employment by gender.....	12
1.2: Employment by age group and educational level	13
Tab. 1.2: Employment and employment-to-population ratio, by education attainment and gender	13
Tab. 1.3: Highest level of education by type of employer for employees (15-64)	14
1.3: Employment status.....	14
1.4: Vulnerable employment.....	14
Tab. 1.5: Vulnerable employment by gender.....	15
Tab. 1.6: Vulnerable employment by occupation and gender	15
Tab. 1.7: Vulnerable employment by educational level and gender	16
1.5: Types of contracts	16
1.6: Employment by activity.....	16
Tab. 1.9: Employment participation by activities and gender (in %), age 15 and over	17
1.7: Employment by occupation	18
Tab. 1.10: Employment by occupation and gender, age 15 and over	18
1.8: Employment models	19
Tab. 1.11: Reasons for working part-time by gender (%).....	19
Tab. 1.13: Average number of hours worked per week by type of employer and gender.....	20
Tab. 1.14: Employment models by gender (in %).....	20
1.9: Net monthly wages	21
2. Unemployment.....	22
2.1: Unemployment by gender	22
Tab. 2.1: Unemployment and unemployment rate by gender.....	22
2.2: Unemployment by age group and educational level.....	23
Tab. 2.3. Unemployment and unemployment rate by education level and gender	23
2.3: Youth unemployment	24
Tab. 2.4: Percentage of unemployed youth in total unemployment and unemployment rate among young people by gender	24
2.4: Duration of unemployment	24
Fig. 2.2. Duration of unemployment for more than a year by age group and gender (%)	25
3. Participation in the labour force	26
Fig. 3.1: Participation rate in the labour force by gender	26
Tab. 3.1: Labour force and the participation rate in the labour force by gender and age group	27
4 Inactive persons.....	28
Fig. 4.1: Economically inactive population as share of the working-age population.....	28
4.1: Inactive youth not in education, employment or training (NEET)	29
Tab. 4.1: Youth not in education, employment or training (NEET) by gender	29
5 Demographic and economic dependency ratios.....	30
Tab. 5.1: Demographic dependency ratios (%)	30
Tab. 5.2: Economic dependency ratios (%)	30
6 Data accuracy	31
Tab. 6: Accuracy of LFS-based estimates for 2024 at country level	31

Definitions

The working age population includes people aged 15 to 64 years. This measure is used to give an estimate of the total number of potential workers within the economy.

The workforce consists of employed and unemployed persons, according to precise definitions given below. Inactive persons are not considered part of the workforce.

1. **Employed:** persons who during the reference week did any work for pay, profit or family gain, in cash or in kind, or who were temporarily absent in their work.
2. **Unemployed:** persons who during the reference week:
 - Were without work, i.e. they were not in paid employment or self-employed;
 - Were currently available for work, i.e. they were willing to start paying job or self-employment within two weeks; and
 - Seeking work, i.e. they had taken specific steps during the past four weeks in search of paid employment or self-employment.
3. **Inactive persons:** persons who during the reference period were neither employed nor unemployed.

Classification of the population in these three above categories depends on the application of the principle of activity - what did the person do during the reference week - and a set of priority rules on activities that give priority to employment over unemployment and unemployment over economic inactivity. Classification also depends on a clear understanding of which activities are considered as "employment".

Participation rate in the workforce is the percentage of the working age population of a country that engages actively in the labour market (employed or unemployed). The labour force (employed and unemployed) to the working age population, expressed as a percentage is:

$$\text{Participation rate in the workforce} = \frac{\text{Employed} + \text{Unemployed}}{\text{Working age population}} \times 100$$

Inactivity rate is the percentage of the working age population of a country that is not part of the labor force (neither employed nor unemployed). When put together, the rate of inactivity rate and participation in the workforce give result of 100 percent.

Employment to population ratio, also known as the employment rate, is the percentage of the working age population of a country that is employed.

$$\text{Employment to population ratio} = \frac{\text{Employed population}}{\text{Working age population}} \times 100$$

The unemployment rate is the percentage of the labour force that is unemployed. Workforce is defined as the basis for this indicator and not the working age population.

$$\text{Unemployment rate} = \frac{\text{Unemployed}}{\text{Labour Force}} \times 100$$

Discouraged workers are persons who do not have jobs, who are currently available for work but have given up looking for work because they believe that they can not find work. This category of discouraged persons is included in the inactive population category.

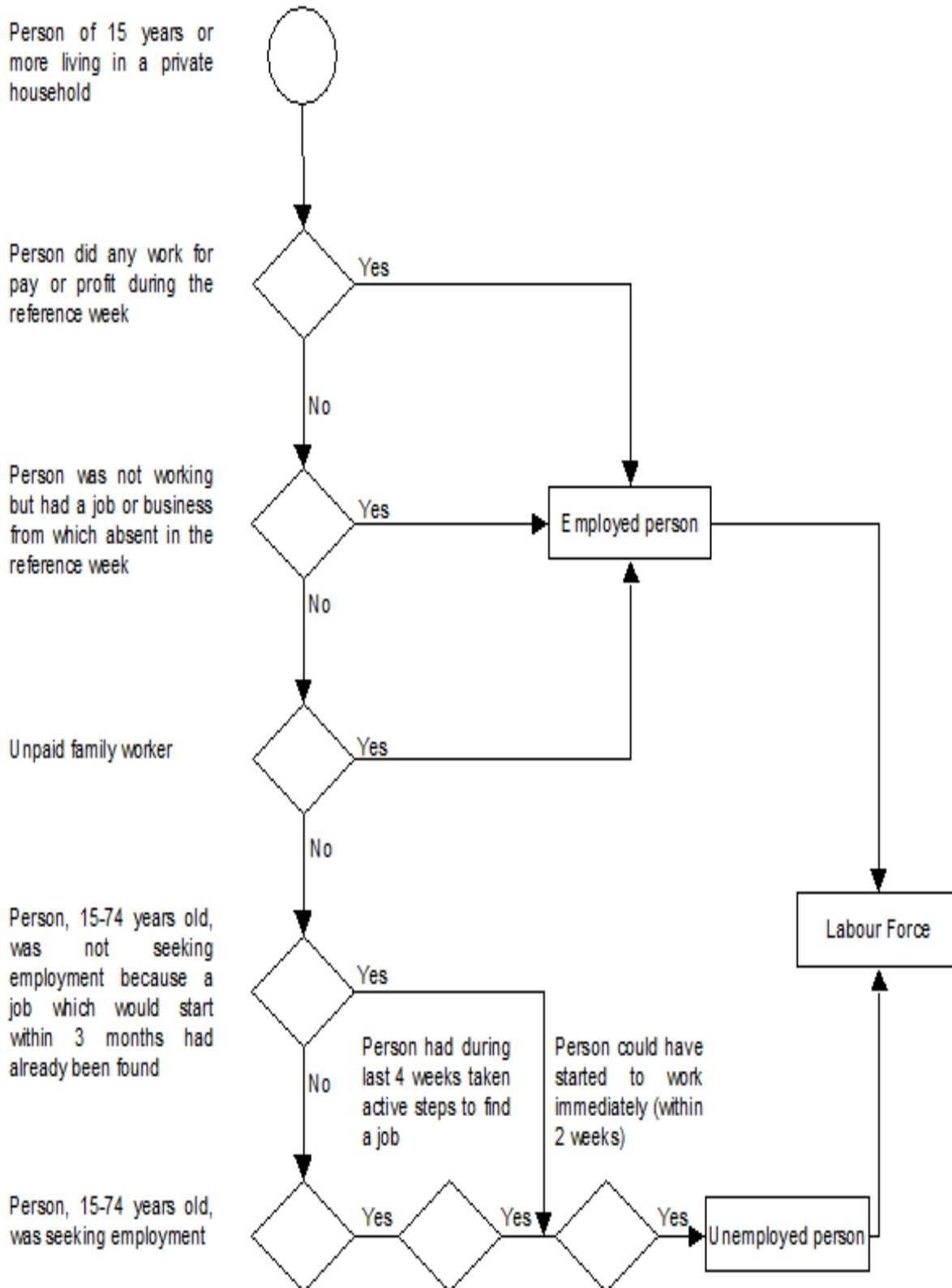
Youth unemployment refers to the unemployment rate of persons aged 15-24 years.

NEET form part of young people (age 15-24) who are neither employed nor attending school nor not even training.

Vulnerable employment refers to self-employed persons who have no employed persons or unpaid family workers. These kind of employees are less likely to have formal work arrangements and more likely for lacking appropriate working conditions.

The diagram below illustrates the criteria used for classification of the population in working age as employed, unemployed or inactive.

Fig. 1: Classification of the workforce in the Labour Force Survey of the European Union



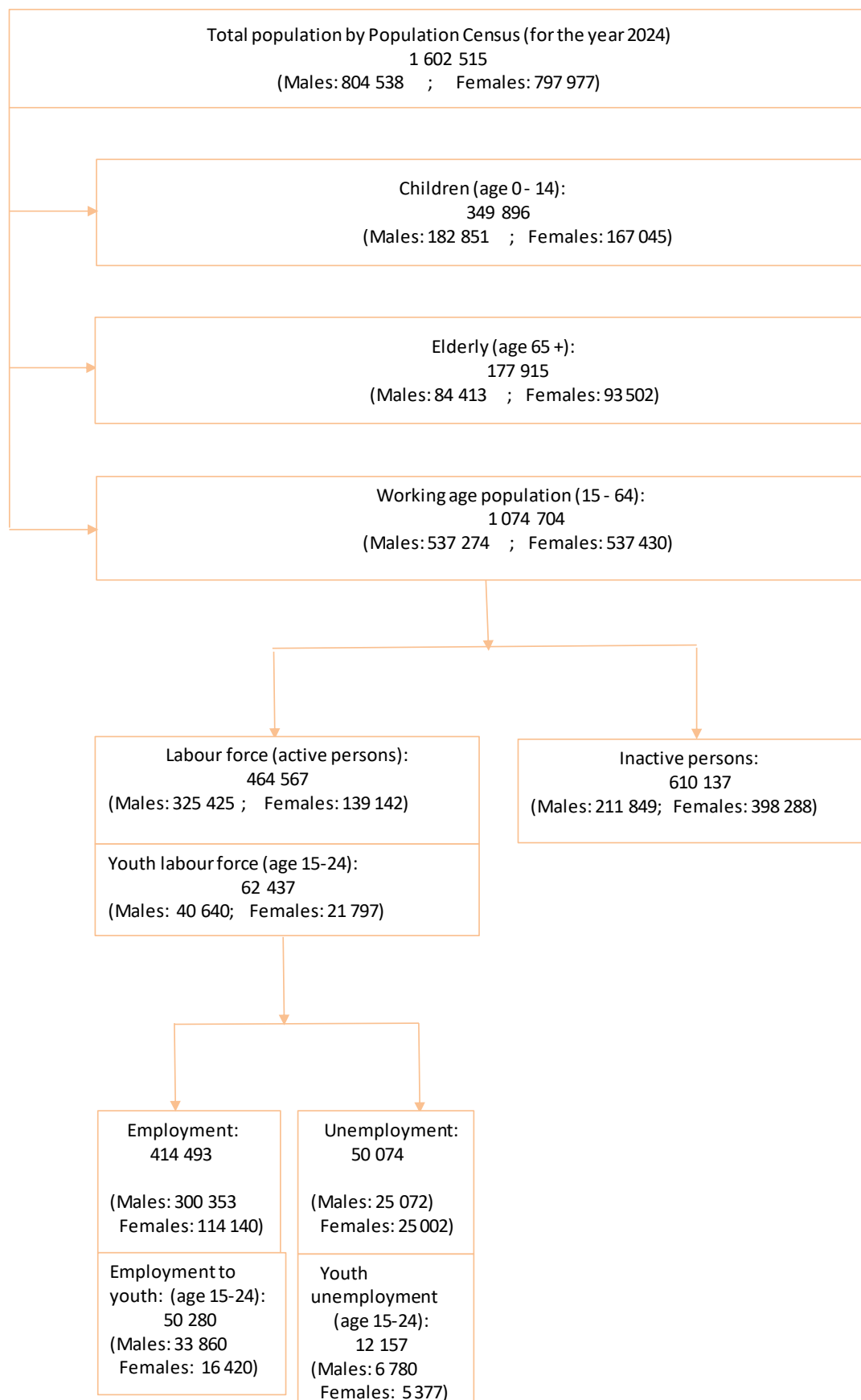
Key indicators

Graph 1 indicates a summary of the state of the labour market of Kosovo's population based on the Labour Force Survey in 2024. Among the main results of the LFS in 2024, as indicated in Graph 1 and elaborated further in this report, are:

- Almost two thirds of Kosovo's population are of working age (age 15-64). It is expected that the working age population to increase rapidly over the next decade as Kosovo is among the countries with the youngest population in Europe.
- Of the working age population, 56.8% are not economically active, which means that they are not employed and have not been active in search of employment during the past four weeks and / or are not ready to start working within two weeks.
- From 43.2% (464 567 persons) of the population that is economically active, 10.8% (50 074 persons) are unemployed.
- The ratio of employment to the population (employment rate), 38.6 % (414 493 are employed).
- 56.8% of the working age population is inactive.
- There are significant gender differences in all labour market.
 - One in five (25.9%) females of working age are active in the labour market, compared with about three-fifths (60.6%) of working-age males.
 - Among persons in the labour force, unemployment is higher for females than for males (18.0% compared to 7.7%).
 - The employment rate among working age females is only 21.2%, compared with 55.9% for males.
- This very low degree of unemployment among females stems from the combination of very low participation in the labour force and high unemployment.
- Females were mainly employed in the education, trade and health sectors (53.4% of employed females). Males were mainly employed in the sectors of trade, construction, and manufacture (employing 47.2% of employed males).
- Youth unemployment is very high in Kosovo.
- In 2024, young people in Kosovo had two times more likely to be unemployed than adults. Among persons aged 15-24 in the labour force, 19.5% were unemployed. Unemployment is higher among young females (24.7%) than young males (19.5%).

- Nearly one-third (31.4%) of those aged 15 to 24 years in Kosovo were not in education, employment or training (NEET). This figure is 32.2% for young females compared with 30.6% for young males.
- Most of those employees reporting to work fulltime.
- 93.1% of respondents reported working full time in their main job.
- The reasons for working part-time differ between the genders, as females, taking on the role of care within the family, reduce the hours available for employment.
- The number one reason for males not working full time, was the lack of a full-time job.
- 14.5% of employed people belonged to the category of unstable employment. This means that they are either employed in their business (own-account workers), or contribute to a family business (paid or unpaid).
- Only 43.5% of employed persons had a permanent contract in their main job, with 2.8% higher for females than males (45.4% to 42.6%), while 56.5% had a temporary contract, with 2.8% more higher in males than in females (57.4% to 54.6%). Persons who had temporary contracts were asked why they had this type of contract and 32.0% of respondents reported that there was no other contract available.
- Net salaries of most employees were between € 400 and € 500 per month.

Fig. 1: Classification of the labour market for the population of Kosovo, 2024



Tab. 1: Key indicators of the labour market

Main labour market indicators (%)	Male	Female	Total
Labour force participation rate	60.6	25.9	43.2
Inactivity rate	39.4	74.1	56.8
Employment to population ratio (employment rate)	55.9	21.2	38.6
Unemployment rate	7.7	18.0	10.8
Youth unemployment rate (15-24 years old)	16.7	24.7	19.5
Participation of NEET youth in youth population (15-24 years)	30.6	32.2	31.4
Share of vulnerable employment in total employment	17.2	7.4	14.5

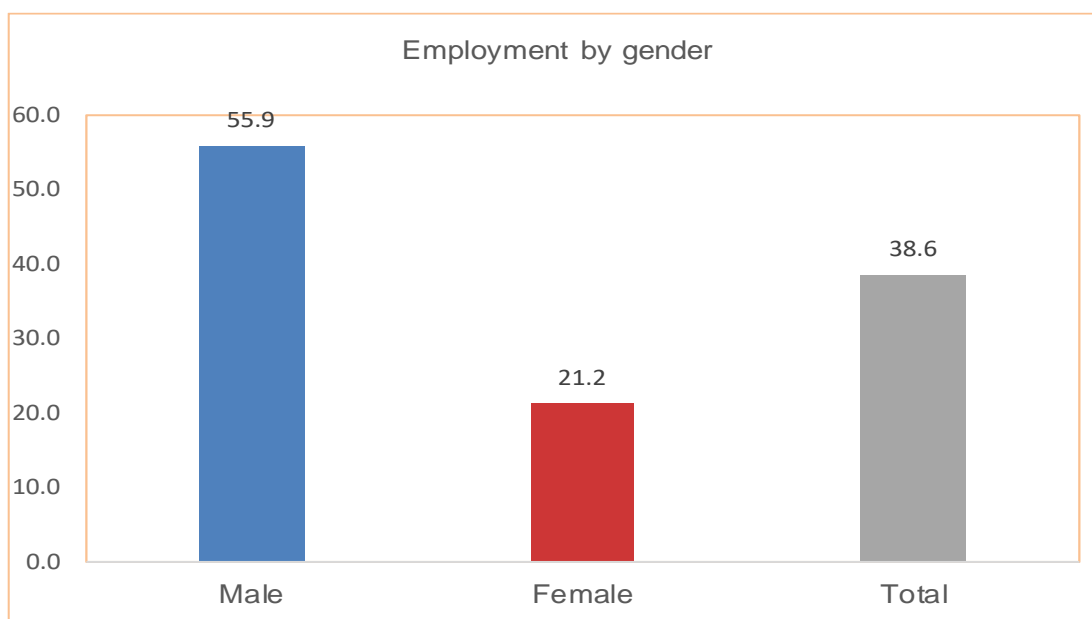
Employment

1.1: Employment by gender

Out of the entire working age population, 38.6% were employed. The employment rate was higher for males than for females: 55.9% of males of working age were employed compared to 21.2% of females of working age.

Compared with the previous LFS (2023) in Kosovo, there is an increase by 2.3% in employment rate, with the increase to females is 1.4%, while for males this increase was 2.5%.

Fig. 1.1: Employment rate by gender



1.2: Employment by age group and educational level

The employment rate in the age group was highest among persons of age between 35-44 (51.1%), and lowest among youth (age 15-24) (19.4%).

The employment rate for females in the 25-54 age group ranges from 30.8% to 21.1%. In the 25-34 age group the employment rate is 30.8%, with a decrease of 2.0% in the 35-44 age group (28.8%) and a decrease of 7.7% compared to the 45-54 age group (21.1%). While employed females in the young age group (15-24 years), were only 13.1% while in the age group (55-64 years) they were 12.5%.

To males (Table 1.1), the employment rate was highest for the age group 35 to 44 (73.0%), followed by the age group 45 to 54 (68.3%) and lowest for young people in the age group 15 to 24 (25.4%).

Tab. 1.1: Employment and employment-to-population ratio, by gender and age group

Kosovo	Male	Female	Total
EMPLOYMENT (IN THOUSANDS)			
15-24	33860	16420	50280
25-34	75322	33617	108939
35-44	77289	29842	107131
45-54	67578	22999	90577
55-64	46303	11263	57566
15-64	300352	114141	414493
Employment to population ratio (%)			
15-24	25.4	13.1	19.4
25-34	65.2	30.8	48.5
35-44	73.0	28.8	51.1
45-54	68.3	21.1	43.6
55-64	55.4	12.5	33.1
15-64	55.9	21.2	38.6

Tab. 1.2: Employment and employment-to-population ratio, by education attainment and gender

Kosovo	Male	Female	Total
EMPLOYMENT (IN THOUSAND)			
No formal education	709	284	993
Primary	34386	10791	45177
Secondary education, vocational	74636	13009	87645
Secondary education, gymnasium	119449	30779	150228
Tertiary	71172	59278	130450
Total	300352	114141	414493
EMPLOYMENT RATE (%)			
No formal education	16.6	2.1	5.5
Primary	29.6	5.2	13.9
Secondary education, vocational	59.6	20.6	46.6
Secondary education, gymnasium	58.9	19.3	41.4
Tertiary	80.3	64.2	72.1
Total	55.9	21.2	38.6

Table 1.2 indicates that the higher the education is, the higher will be the possibility for employment (80.3% to males and 64.2% to females).

Tab. 1.3: Highest level of education by type of employer for employees (15-64)

Kosovo	Public sector, government	State-owned enterprise	Private company or enterprise	Individual private
HIGHEST EDUCATIONAL LEVEL (%)				
No formal education	0.1	0.2	0.2	1.5
Primary	3.9	5.7	10.6	34.7
Secondary education, vocational	15.0	14.4	23.0	24.9
Secondary education, gymnasium	19.7	44.1	41.6	30.2
Tertiary	61.4	35.6	24.5	8.7
Total	100.0	100.0	100.0	100.0

Table 1.3 indicates that job requirements are higher for government positions, where over half of all employees (61.4%) have completed higher education.

1.3: Employment status

In 2024, 79.2% of employed persons were employees, 6.3% were self-employed and had other employees, 10.3% were self-employed with no other employees and 4.2% were family workers (Table 1.4). The majority of employed females had the status of employees (90.5% compared to 74.9% for males).

Tab. 1.4: Status in employment by gender (%)

Kosovo	Male	Female	Total
Employment status (IN THOUSANDS)			
Employed	224996	103289	328285
Self-employed with employees	23657	2422	26079
Self-employed without employees	38018	4611	42629
Unpaid family worker	13681	3819	17500
Total	300352	114141	414493
Participation of status category in total employment (%)			
Employed	74.9	90.5	79.2
Self-employed with employees	7.9	2.1	6.3
Self-employed without employees	12.7	4.0	10.3
Unpaid family worker	4.6	3.3	4.2
Total	100.0	100.0	100.0

1.4: Vulnerable employment

Besides the low level of employment in Kosovo, 14.5% of employed persons worked in unstable jobs. Workers in vulnerable employment are either self-employed people without employees or those who work without pay in a family business. These two groups of workers are likely lower to have a formal work agreement compared to workers with pay and salary.

Males are more likely to hold such vulnerable employment (17.2% of employed males compared to 7.4% of employed females). Expressed in absolute numbers, 60 130 of 414 493 employees belong to the category of vulnerable employment (Table 1.5). Employees in occupational areas are less likely to be employed in unstable jobs (Table 1.6), as well as persons with higher level of education (Table 1.7).

Tab. 1.5: Vulnerable employment by gender

Kosovo	
VULNERABLE EMPLOYMENT (IN THOUSAND)	
Male	51699
Female	8431
Total	60130
SHARE OF VULNERABLE EMPLOYMENT IN TOTAL EMPLOYMENT (%)	
Male	17.2
Female	7.4
Total	14.5

Tab. 1.6: Vulnerable employment by occupation and gender

Kosovo	Male	Female	Total
SELF-EMPLOYED WITHOUT EMPLOYEES (%)			
Managers	7.5	4.7	7.2
Professionals	7.6	17.9	8.7
Technicians and related occupations with them	2.6	0.7	2.4
Clercs and assistants	0.4	0.0	0.3
Service and sales workers	25.6	44.5	27.6
Skilled agricultural, forestry and fishery workers	8.5	3.9	8.0
Craft and related trades workers	28.5	15.4	27.1
Plant and machine operators, and assemblers	9.1	0.0	8.1
Elementary occupations	10.2	13.0	10.5
Total	100.0	100.0	100.0
UNPAID FAMILY WORKERS (%)			
Managers	4.8	12.9	6.6
Professionals	4.2	1.0	3.5
Technicians and related occupations with them	5.5	6.0	5.6
Clercs and assistants	0.3	5.1	1.3
Service and sales workers	25.2	44.6	29.4
Skilled agricultural, forestry and fishery workers	14.3	17.1	14.9
Craft and related trades workers	22.9	6.8	19.4
Plant and machine operators, and assemblers	5.7	0.0	4.4
Elementary occupations	17.0	6.6	14.8
Total	100.0	100.0	100.0

Tab. 1.7: Vulnerable employment by educational level and gender

Kosovo	Male	Female	Total
SELF-EMPLOYED WITHOUT OTHER EMPLOYEES (%)			
No formal education	0.1	0.0	0.1
Primary	17.8	26.1	18.7
Secondary education, vocational	28.4	11.3	26.6
Secondary education, gymnasium	41.9	37.7	41.5
Tertiary	11.7	24.9	13.2
Total	100.0	100.0	100.0
UNPAID FAMILY WORKERS (%)			
No formal education	1.3	1.4	1.3
Primary	12.9	24.0	15.3
Secondary education, vocational	22.1	13.9	20.3
Secondary education, gymnasium	51.8	38.1	48.8
Tertiary	11.9	22.6	14.2
Total	100.0	100.0	100.0

1.5: Types of contracts

Regarding the type of contract that the interviewed employees had, the majority (80.5%) had an individual contract, while 7.4% worked without a contract, 7.5% a collective contract with the employer and 3.6% stated that they have a collective contract with the union and 0.9% have stated that they have a group contract. For young people (15 to 24 years old), the percentage of those who worked without a contract was 13.6%.

From people who have an employment contract, only 43.5% had a permanent contract for their main job, 2.8% higher for females than for males (45.4% to 42.6%), while 56.5% had a temporary contract, 2.8% higher for males than for females (57.4% to 54.6%). Those with temporary contracts were asked why they had this type of contract, and 32.0% of respondents reported that there was no other type of contract available.

When asked if they had their rights in their main job, to benefit from social security scheme at work, the survey data indicated that only 15.6% of employees had this right.

1.6: Employment by activity

Trade, construction, education, manufacturing and other services activities employ more than half of employed persons in 2024 (see tables 1.8 and 1.9). Trade employ 19.5%, continuing with construction with 12.6%, manufacturing with 10.6%, education with 8.8%, public administration and defense with 8.1% of employed persons in Kosovo.

Trade, education, and health care were the three leading female employers (employing 53.5% of employed females). Trade, construction and manufacturing are the most common sectors of employment for males (employing 47.1% of employed males).

Tab. 1.8: Employment by activities and gender (in thousands), age 15 and over

Kosovo (age 15 and over)	Male	Female	Total
Employment by activity (IN THOUSAND)			
A - Agriculture, forestry and fishing	10415	1316	11731
B - Mining and ore	4059	115	4174
C - Manufacture	35466	9057	44523
D - Supply of electricity, gas, steam and air conditioning	6901	506	7407
E - Water supply, sewerage, waste management	3952	334	4286
F - Construction	51500	1164	52664
G - Wholesale and retail trade, car and motorcycle repairs	56862	24946	81808
I - Accommodation and food service activities	24036	6484	30520
H - Transport and storage	14040	1489	15529
J - Information and communication	9726	2733	12459
K - Financial and insurance activities	5967	4294	10261
L - Properties activities	821	175	996
M - Professional, scientific and technical activities	7772	3358	11130
N - Administrative and support service activities	10972	7098	18070
O - Public administration and defense, compulsory social security	26419	7405	33824
P - Education	15891	20830	36721
Q - Activities of human health and social work	8099	15549	23648
R - Arts, entertainment and recreation	2746	1420	4166
S - Other service activities	6081	4422	10503
T - Household employment activity	342	279	621
U - Activities of the institutions and extra-territorial organizations	2591	1806	4397
Total	304658	114780	419438

Tab. 1.9: Employment participation by activities and gender (in %), age 15 and over

Kosovo (age 15 and over)	Male	Female	Total
Employment participation by activity (%)			
A - Agriculture, forestry and fishing	3.4	1.1	2.8
B - Mining and ore	1.3	0.1	1.0
C - Manufacture	11.6	7.9	10.6
D - Supply of electricity, gas, steam and air conditioning	2.3	0.4	1.8
E - Water supply, sewerage, waste management	1.3	0.3	1.0
F - Construction	16.9	1.0	12.6
G - Wholesale and retail trade, car and motorcycle repairs	18.7	21.7	19.5
I - Accommodation and food service activities	7.9	5.6	7.3
H - Transport and storage	4.6	1.3	3.7
J - Information and communication	3.2	2.4	3.0
K - Financial and insurance activities	2.0	3.7	2.4
L - Properties activities	0.3	0.2	0.2
M - Professional, scientific and technical activities	2.6	2.9	2.7
N - Administrative and support service activities	3.6	6.2	4.3
O - Public administration and defense, compulsory social security	8.7	6.5	8.1
P - Education	5.2	18.1	8.8
Q - Activities of human health and social work	2.7	13.5	5.6
R - Arts, entertainment and recreation	0.9	1.2	1.0
S - Other service activities	2.0	3.9	2.5
T - Household employment activity	0.1	0.2	0.1
U - Activities of the institutions and extra-territorial organizations	0.9	1.6	1.0
Total	100.0	100.0	100.0

1.7: Employment by occupation

In 2024, most of the employees were working in positions of service and sales, as professionals, in elementary occupations and craft workers (Table 1.10).

Almost half of the employed females were: professionals 35.4%, in services and sales 23.9%, office workers and assistants 11.7%, 8.1% were in technicians and professional associates. Males were more widely distributed across sectors, but the majority were employed as: services and sales (27.4%), 19.8% as craft workers and work-related elementary occupations, 11.8% were professionals, 10.4% were in elementary occupations (Table 1.10).

Tab. 1.10: Employment by occupation and gender, age 15 and over

Kosovo	Male	Female	Total
EMPLOYMENT BY OCCUPATION (IN THOUSAND)			
Managers	22513	7541	30054
Professionals	35849	40675	76524
Technicians and related occupations with them	22315	9351	31666
Clercs and assistants	17982	13415	31397
Service and sales workers	83350	27460	110810
Skilled agricultural, forestry and fishery workers	6728	946	7674
Craft and related trades workers	60339	6689	67028
Plant and machine operators, and assemblers	24001	704	24705
Elementary occupations	31581	7999	39580
Total	304658	114780	419438
EMPLOYMENT BY OCCUPATION (IN %)			
Managers	7.4	6.6	7.2
Professionals	11.8	35.4	18.2
Technicians and related occupations with them	7.3	8.1	7.5
Clercs and assistants	5.9	11.7	7.5
Service and sales workers	27.4	23.9	26.4
Skilled agricultural, forestry and fishery workers	2.2	0.8	1.8
Craft and related trades workers	19.8	5.8	16.0
Plant and machine operators, and assemblers	7.9	0.6	5.9
Elementary occupations	10.4	7.0	9.4
Total	100.0	100.0	100.0

1.8: Employment models

Only 0.6% of the employed population reported that they had a second job during the reference week (0.7% of males compared to 0.4% of females).

In their main job, 93.1% of respondents reported working full time and 6.9% part-time. Gender differences were observed, that males work part-time (7.7% of males compared to 4.9% of females).

For those who do part-time work, reasons differed between the genders, females take a greater role in family care thus reducing the hours available for work (Table 1.11). The number one reason for males not working full time was the lack of availability of full-time work.

Tab. 1.11: Reasons for working part-time by gender (%)

Kosovo	Male	Female	Total
Caring for children or adults with disabilities	0.7	3.9	1.3
Disability or illness	0.6	0.4	0.6
Other personal or family reasons	13.2	28.0	16.1
A student	2.0	2.3	2.1
No option to make a full-time job	45.1	31.5	42.5
Does not want a full-time job	5.8	9.8	6.6
Other reason	32.5	24.1	30.9
Total	100.0	100.0	100.0

Within a week, 74.1% of employees worked between 40-48 hours per week, 8.6% of employees worked between 49-59 hours per week, 6.4% of employees worked 60 or more hours per week. Within a week, 10.9% of employees worked less than 40 hours.

Males tend to work longer hours than females, 18.9% of males work more than 48 hours per week compared to 4.7% of females (Table 1.12). A larger proportion of employed females (11.1%) worked less than 40 hours compared to 10.8% of males.

Tab. 1.12: Employment by hours of work per week and by gender

Kosovo	Male	Female	Total
EMPLOYMENT BY THE NUMBER OF HOURS (IN THOUSAND)			
Less than 25	18849	7526	26375
25-34	10802	4465	15267
35-39	2769	682	3451
40-48	211202	96053	307255
49-59	31905	3886	35791
60 and more	24825	1529	26354
Total	300352	114141	414493
EMPLOYMENT BY THE NUMBER OF HOURS (IN %)			
Less than 25	6.3	6.6	6.4
25-34	3.6	3.9	3.7
35-39	0.9	0.6	0.8
40-48	70.3	84.2	74.1
49-59	10.6	3.4	8.6
60 and more	8.3	1.3	6.4
Total	100.0	100.0	100.0

Respondents working in the public sector have reported shorter hours than those working in the private sector (Table 1.13). Males and females working in private companies have worked longer hours compared to all types of employment.

Tab. 1.13: Average number of hours worked per week by type of employer and gender

Kosovo	Public sector, Government	State-owned enterprise	Private company or enterprise	Individual private
Male	39	39	44	44
Female	37	36	41	33
Total	38	38	43	43

The chances are lower for females to work in shifts during night shifts, evenings and weekends but slightly larger to work from home (Table 1.14).

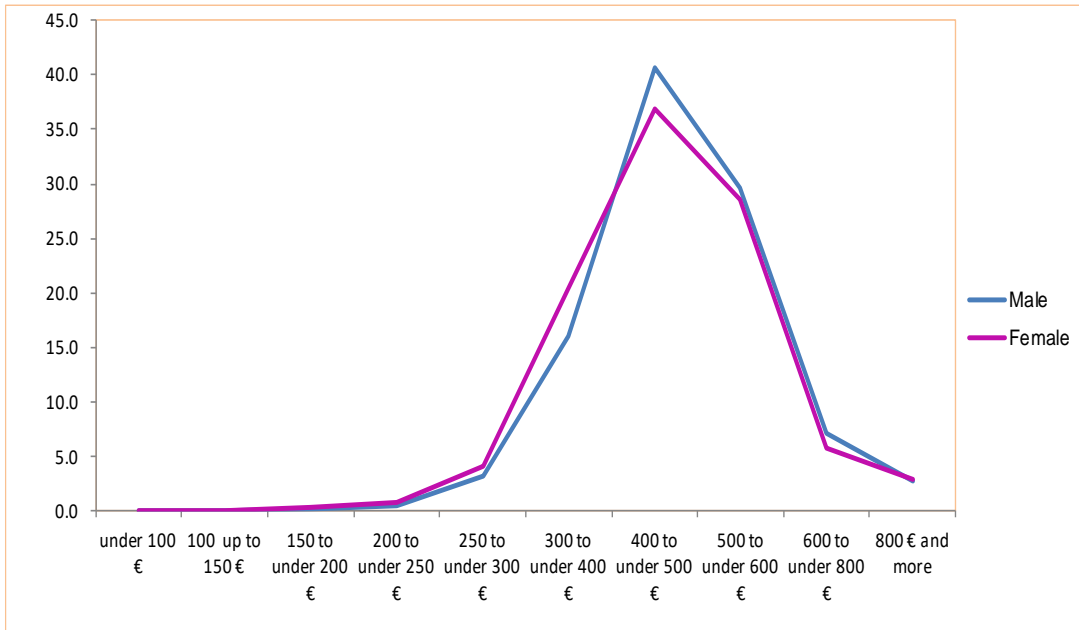
Tab. 1.14: Employment models by gender (in %)

Kosovo	Male	Female	Total
IF WORKING IN SHIFTS			
Working in shifts	24.2	24.8	24.4
Not working in shifts	75.8	75.2	75.6
Total	100.0	100.0	100.0
IF WORKING EVENINGS			
Usually	1.7	1.0	1.5
Sometimes	31.3	29.5	30.8
Never	67.0	69.5	67.6
Total	100.0	100.0	100.0
IF WORKING AT NIGHT			
Usually	0.8	0.4	0.7
Sometimes	14.4	9.8	13.1
Never	84.8	89.8	86.1
Total	100.0	100.0	100.0
IF WORKING ON SATURDAYS			
Usually	28.6	14.1	24.6
Sometimes	33.3	29.0	32.1
Never	38.1	56.9	43.2
Total	100.0	100.0	100.0
IF WORKING ON SUNDAYS			
Usually	2.6	1.3	2.3
Sometimes	26.1	22.2	25.1
Never	71.2	76.5	72.7
Total	100.0	100.0	100.0
IF WORKING FROM HOME			
Usually	3.1	2.6	3.0
Sometimes	6.1	4.8	5.8
Never	90.8	92.6	91.2
Total	100.0	100.0	100.0

1.9: Net monthly wages

The net wages of the majority of employees were between 400 € and 500 € per month.

Fig. 1.2: Net monthly wages for employees by gender



2. Unemployment

2.1: Unemployment by gender

According to LFS of 2024, in Kosovo there were 50 074 persons aged 15-64 years who were unemployed, 25 072 of whom were males and 25 002 females (Table 2.1). Unemployment rate was 10.8%, highest to females by 18.0% than to males by 7.7% (Graph 2.1).

Compared to the same period last year (LFS 2023), we have a decrease in the unemployment rate by 0.1%, where we have a decrease to females by 0.2% while to males remains unchanged.

Fig. 2.1: Unemployment rate by gender



Tab. 2.1: Unemployment and unemployment rate by gender

Kosovo	Male	Female	Total
UNEMPLOYMENT (IN THOUSAND)			
15-64	25072	25002	50074
UNEMPLOYMENT RATE (%)			
15-64	7.7	18.0	10.8

Fig. 2.1: Unemployment rate by gender**Tab. 2.1: Unemployment and unemployment rate by gender**

Kosovo	Male	Female	Total
UNEMPLOYMENT (IN THOUSAND)			
15-64	25072	25002	50074
UNEMPLOYMENT RATE (%)			
15-64	7.7	18.0	10.8

2.3: Youth unemployment

Based on the LFS of 2024, 24.3% of the unemployed in Kosovo were young people (aged 15-24 years) with 5.5-point difference between males and females.

A significant proportion of the young population is unemployed (19.5%) and youth unemployment among females is higher (24.7%) compared to males (16.7%).

Tab. 2.4: Percentage of unemployed youth in total unemployment and unemployment rate among young people by gender

Kosovo	Male	Female	Total
Percentage of unemployed youth in total unemployment (%)	27.0	21.5	24.3
Percentage of youth as unemployed in young population (%)	16.7	24.7	19.5

In 2024, young people in Kosovo were two time more likely to be unemployed compared to adults, with a 1.1-point difference between males and females. (Table 2.5).

Tab. 2.5: Ration of youth-to-adult unemployment rate, by gender

Kosovo	Male	Female	Total
The rate of youth unemployment to adult unemployment	2.6	1.5	2.1

2.4: Duration of unemployment

Unemployed respondents were asked how long are unemployed. A large number (77.4%) of the unemployed reported that they are unemployed for longer than 12 months. Gender differences were observed with 2.1-points difference between males and females (78.4% of males and 76.3% of females).

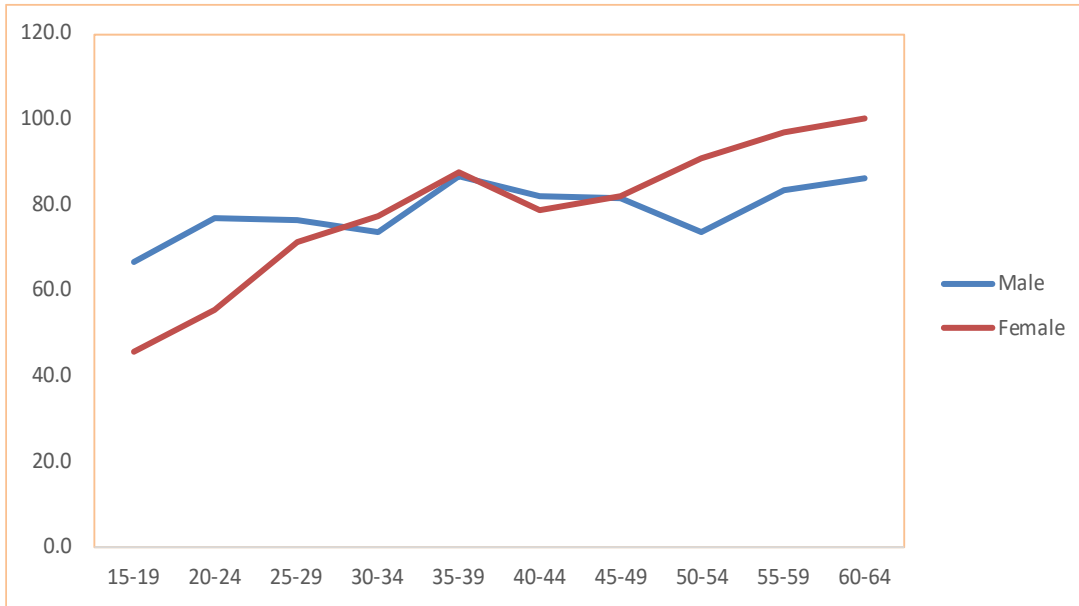
(Table 2.6) indicates that the likelihood of being unemployed for more than a year increased with age.

Tab. 2.6: Duration of unemployment for more than one year of total unemployment by gender and age group (%)

Kosovo	Male	Female	Total
15-19	66.6	45.4	55.8
20-24	76.7	55.3	67.6
25-29	76.3	71.1	74.2
30-34	73.5	77.3	75.7
35-39	86.9	87.5	87.3
40-44	82.0	78.8	80.4
45-49	81.6	81.9	81.8
50-54	73.5	90.9	83.4
55-59	83.4	96.8	90.4
60-64	86.4	100.0	92.0
Total	78.4	76.3	77.4

Graph 2.2 indicates that the age group 35-39, although young, to females' unemployment for more than a year reaches 87.5% compared to 86.9% for males.

Fig. 2.2. Duration of unemployment for more than a year by age group and gender (%)



3. Participation in the labour force

In 2024, out of the total estimated population of 1 602 515, the total population of working age (15 to 64) was 1 074 704 people. 43.2% of people of working age participate in the labour force (economically active). This means that they were either employed or unemployed (but actively looking for work and available for work). The remaining 56.4% were economically inactive (Fig. 4.1). Economically inactive persons include students, housewives, discouraged workers and others who were not actively looking for a job and this category is examined in more detail in the next chapter.

Compared to the same period last year of the LFS (2023), we have an increase in the rate of participation in the labor force by 2.5%, where for males this increase was 2.8%, while for females this increase was 1.7%.

Fig. 3.1: Participation rate in the labour force by gender

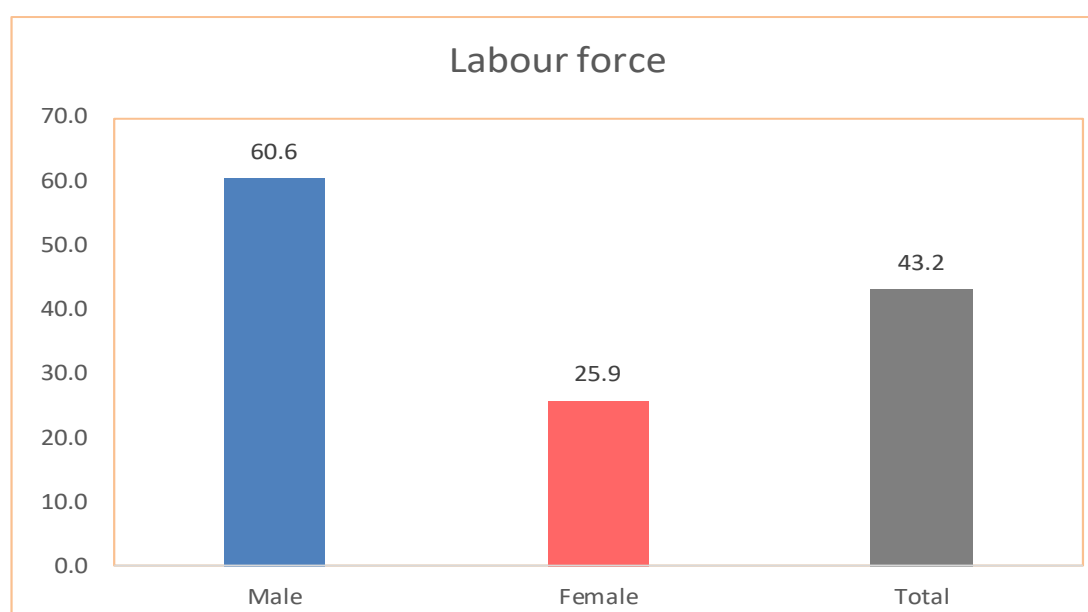


Fig 3.1 clarifies that workforce participation among females was much lower than among males: 25.9% of females were active compared to 60.6% of males.

The rate of participation in the workforce was highest among people aged 35-39 (57.0%) and the lowest among people aged 15 to 19 with 7.4% (Table 3.1). The low participation rate of young people is not surprising as most of this group attend school.

Males aged 35-39 years had higher participation rates (79.6%), while for females the highest rate was in the age group 25-29 at (40.7%) (Table 3.1).

Tab. 3.1: Labour force and the participation rate in the labour force by gender and age group

Kosovo	Male	Female	Total
Labour force (in thousand)			
15-19	5891	3201	9092
20-24	34749	18596	53345
25-29	40958	22420	63378
30-34	42270	18388	60658
35-39	42431	17521	59952
40-44	39618	17950	57568
45-49	36877	15940	52817
50-54	33310	11079	44389
55-59	28596	8192	36788
60-64	20725	5855	26580
Total 15 - 64	325425	139142	464567
Rate of participation in labour force (%)			
15-19	9.2	5.4	7.4
20-24	49.9	28.4	39.5
25-29	69.1	40.7	55.4
30-34	75.2	34.0	55.0
35-39	79.6	33.8	57.0
40-44	75.3	34.6	55.1
45-49	72.1	28.7	49.5
50-54	69.7	20.7	43.8
55-59	65.2	17.0	39.9
60-64	52.3	13.9	32.5
Total 15 - 64	60.6	25.9	43.2

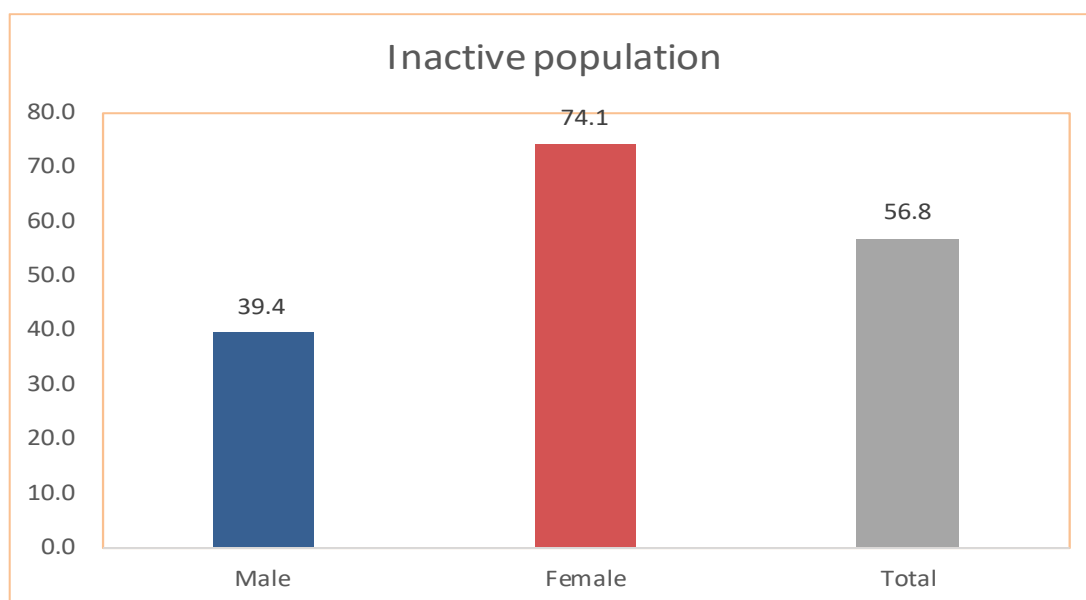
4 Inactive persons

Special attention is paid to the description and estimation of the employed population and the unemployed, which together comprise the Labour Force (or economically active persons). However, the category of "inactive" is equally important. Changes in activity rates are an important part of labour supply impact on potential economic growth. This is due to the large number of potential workers among those currently inactive.

Compared to the same period last year (2023) of the LFS in Kosovo, we have a decrease in the inactivity rate by 2.5%, where to males this decrease was 2.8%, while to females this decrease was 1.7%.

Fig 4.1 clarifies that the largest participation is among females than among males: 74.1% of females were inactive compared to 39.4% of males.

Fig. 4.1: Economically inactive population as share of the working-age population



4.1: Inactive youth not in education, employment or training (NEET)

The youth of this group (NEET) involve young people who are unemployed, not in school, nor trained, i.e. they are completely detached from the labour market and does not participate neither in the education system. High rates of this group in the population of young people raise concerns about youth employment in the future as it indicates detachment from the labour market. In addition, a large number of young people not engaged in countries with high unemployment of young people, such as Kosovo, can cause reduced profits due to increased competition, and has the opportunity to contribute to social problems.

In 2024, 81 235 of young people (aged 15 to 24) in Kosovo were not in education, employed or in training, and account for 33.4% of the young population. Part of NEET for females 32.2% compared with 30.6% of males (Table 4.2).

Tab. 4.1: Youth not in education, employment or training (NEET) by gender

Kosovo	Male	Female	Total
Youth NEET (in thousand)	40869	40366	81235
Youth NEET share of young population (%)	30.6	32.2	31.4

5 Demographic and economic dependency ratios

Presented in Table 5.1 are three levels of economic dependency (data presented as the proportion of dependents per 100 out of working-age population):

- The degree of dependence of young people (respondents aged under 15 / respondents aged 15-64)
- The dependency of the elderly (respondents aged 65 + / respondents aged 15-64)
- The age dependency ratio (the respondents younger than 15 or older than 64 / respondents aged 15-64).

Tab. 5.1: Demographic dependency ratios (%)

Kosovo	Rate of youth dependency	Rate of elderly dependency	Rate of age dependency
2024	33	17	49

Another level used often, particularly in the publications of Eurostat, the degree of effective economic dependency of the elderly. This is an important indicator for assessing the potential impact of age on the social costs related to employment (pensions, etc.). This indicator is calculated as the ratio between the population aged 65+ (all classified as inactive) and total employment. For this report, Eurostat has determined the age range of employees from 20 to 64 years. According to projections, this indicator will increase to 68% in 2060 to EU28. In Kosovo, this ratio is 49% in 2024.

Tab. 5.2: Economic dependency ratios (%)

Kosovo	Effective economic dependency ratio of the elderly	Total rate of economic dependence
2024	43	191

The total economic dependence rate is calculated as the ratio between the total inactive population (15+) and employment (age 20-64). It measures the average number of persons aged 15 years and over, that "support" each employee. This ratio is 191% in LFS of 2024. According to projections, by 2060 the ratio will continue to rise in the EU, at 141.6%.

6 Data accuracy

The reliability and accuracy of the outcomes of the Labor Force Survey (LFS) is dependent on the lack of responses during the interview process, data processing errors, and during design and sampling selection.

The odd effect due to sampling means that the results calculated from different samples deviate somewhat from each other. Employed and unemployed figures that are derived based on a larger and more representative sample are more accurate than those based on smaller samples.

Non-accuracy due to design and sample selection is assessed by the standard error of estimation. The size of the standard error is influenced by the size of the sample and variance of the variables that are the subject of the study. The standard error can be used to calculate the confidence interval within which the value of the population stands at a certain probability. The country-wide estimation of the number of unemployed based on LFS for of 2024 is 10.8% and its standard error is 0.6% while the confidence interval for the number of unemployed (9.7%; 11.9%).

Tab. 6: Accuracy of LFS-based estimates for 2024 at country level

Kosovo		Labour force participation rate	Employment to population ratio; Employment rate	Unemployment rate
Quarterly estimation (%)		43.2	38.6	10.8
Standard error		0.5	0.5	0.6
Reliability interval 95%	Low	42.3	37.7	9.7
	High	44.1	39.5	11.9
Variation coefficient (%)		1.1	1.2	5.3

The accuracy of the ratings is presented based on their standard error. The standard error (square root of sample variance) describes how accurately the value of the parameter estimated by the sample is concentrated around the population parameter.

The main reliability figures derived from the standard error are the confidence intervals and the relative standard error (coefficient of variation). The confidence interval describes the width at which the real value of the parameter is in relation to the estimate calculated by the sample. When you calculate the confidence interval, the desired risk level is fixed. The 5% risk level applied to the workforce survey means that if the samples are retracted, in 95 cases out of a hundred, the real value of the parameter would be within the confidence interval and in 5 cases out of a hundred will be outside the confidence interval.

About the Kosovo Agency of Statistics

Short Description

Brief History - The Kosovo Agency of Statistics (KAS) is a professional and independent institution responsible for collecting, processing, and publishing official statistical data at the national level. Established in 1948, KAS has gone through various phases of development, operating in accordance with the state structures of its time.

After an interruption during the period 1989–1999, KAS resumed its operations on August 2, 1999, as an independent institution within the Ministry of Public Administration. From July 1, 2020, for nearly two full years, it operated under the Ministry of Finance, Labour and Transfers. Currently, it functions under the Office of the Prime Minister of the Republic of Kosovo. The financing of KAS is provided by the Budget of the Republic of Kosovo and by international donors for specific projects and technical assistance.

Legislation - KAS operates under Law No. 04/L-036 on Official Statistics and the relevant amendments through Law No. 06/L-058. The organizational structure includes Production Departments such as: Economic Statistics Department, National Accounts Department, Social Statistics Department, Agriculture and Environment Statistics Department; and Support Departments including the Department of Methodology and Information Technology, the Department for Policy, Planning, Coordination and Communication, the Department of Census and Surveys, and the Administration Department. The Agency also operates Regional Offices in: Pristina, Prizren, Peja, Gjakova, Gjilan, Ferizaj, and Mitrovica.

KAS Mission - To provide high-quality, objective, and reliable statistical data for all users – government institutions, the academic community, the private sector, and the general public – to support decision-making, planning, and policy development at all levels.

KAS Objective - To produce and disseminate statistical data in a systematic, reliable, and impartial manner. This includes professional use and ethical standards, meaning that policies and practices are transparent to both users and survey respondents.

KAS Vision - To be the leading and most reliable source of official statistics in Kosovo, in line with international standards, supporting decision-making, transparency, and sustainable development of the country.

Cooperation - KAS cooperates with all ministries of the Government of Kosovo, especially the Ministry of Finance, Labour and Transfers, as well as the Central Bank of Kosovo, which together form the Statistical System of Kosovo. The Agency also collaborates closely with international organizations such as: EUROSTAT, IMF, World Bank, INSTAT, SIDA, DFID, UNFPA, UNDP, UNICEF, VIIES, IMF, ILO STAT, UNODC, ETF, IA, OECD, and the statistical institutions of the region.

In 2024, the Population, Household and Housing Census in Kosovo was successfully conducted – a key project for the development of sustainable policies.

KAS covers the entire territory of the Republic of Kosovo through a network of reporting units and statistical districts, ensuring primary data collection in accordance with international standards.

- **Address: KOSOVO AGENCY OF STATISTICS,**
Str."Zenel Salihu", no. 4, 10000 Prishtina

- **Telephone:** +383 (0) 38 200 31 129
- Chief Executive: +383 (0) 38 200 31 112
- **Fax:** +383 (0) 38 235 033
- **E-mail:** infoask@rks-gov.net
- **Web page:** <http://ask.rks-gov.net>
- ©: Kosovo Agency of Statistics,